

# BRMBMAPS

---

Mobile APP and Webmap

- **Managing Your Subscription**
- **Free vs Pro**
- **Creating a Trip using the webmap(PRO users)**
- **BRMBMAPS LEGEND**

# Managing Your Subscription

BRMB Maps offers three ways to subscribe to the **PRO** plan:

- **Web** (credit?card or PayPal)
- **iOS App Store**
- **Google Play Store**

Below is a step?by?step guide for canceling, upgrading, and troubleshooting each platform. Screenshots are linked to help you navigate the UI.

## 1. Cancel a PRO Subscription

Platform	How to Cancel
Website	<ol style="list-style-type: none"><li>1. Log in at <a href="https://brmbmaps.com">https://brmbmaps.com</a>.</li><li>2. Click your username in the top?right corner ? <b>User Dashboard</b>.</li><li>3. Select <b>Settings?&gt;?Your Plan</b>.</li><li>4. Click <b>Cancel Automatic Payment</b>.</li></ol>
iOS App Store	<ol style="list-style-type: none"><li>1. Open <b>App Store</b>.</li><li>2. Tap your profile picture in the top?right.</li><li>3. Select <b>Subscriptions</b>.</li><li>4. Find <b>BRMB?Maps</b> and tap <b>Cancel Subscription</b>.</li></ol>
Google Play Store	<ol style="list-style-type: none"><li>1. Open <b>Google Play Store</b>.</li><li>2. Tap the profile icon (top?right).</li><li>3. Go to <b>Payments &amp; subscriptions?&gt;?Subscriptions</b>.</li><li>4. Select <b>BRMB?Maps</b> and tap <b>Cancel Subscription</b>.</li></ol>

“ **Note:** If you subscribed via the web, the cancellation will stop future charges but you can still use the PRO features until the current billing period ends.

## 2. Resolve Subscription Issues

- **Google Play** – [Fix subscription issues](#)
- **Apple iTunes** – [Fix subscription issues](#)
- **BRMBMaps.com** - Contact support with your email or username for the app..

### 3. Request a Refund

Store	Refund Process
Apple iTunes Store	<a href="https://support.apple.com/en-ca/HT204084">https://support.apple.com/en-ca/HT204084</a> – “How do I request a refund for an App Store purchase?”
Google Play	<a href="https://support.google.com/googleplay/answer/2479637?hl=en&amp;sjid=8517244894522933406-NA">https://support.google.com/googleplay/answer/2479637?hl=en&amp;sjid=8517244894522933406-NA</a> – “How do I request a refund for a subscription?”
BRMBMaps.com	Contact support with your email billing statement or PRO purchase history.

“ If you’re part of a Family Sharing plan on iOS, the subscription can only be cancelled by the Family Member who owns the Apple ID.

### 3. Locate the Receipt to Cancel a Subscription

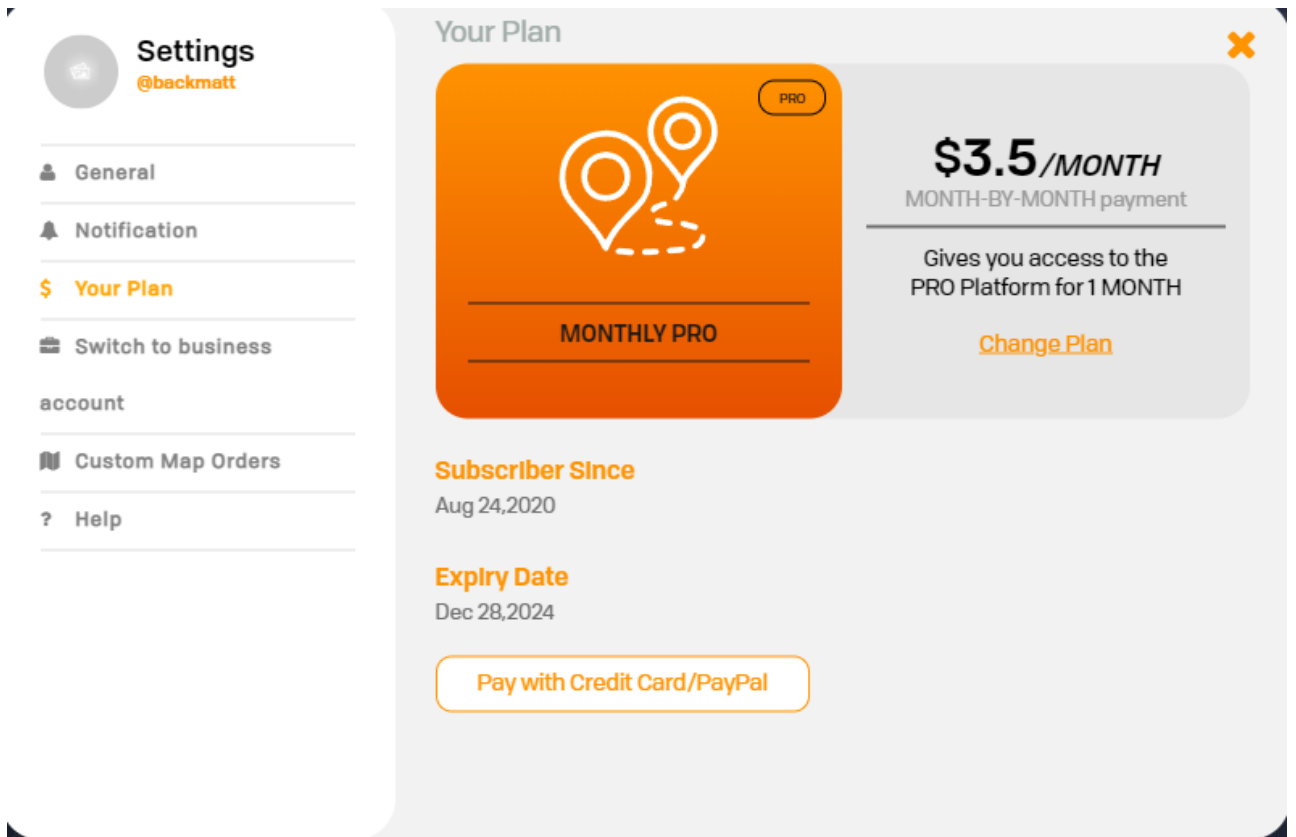
1. Search your email inbox for the phrase “**receipt from Apple.**”
2. Open the receipt and **verify the Apple?ID** used for the purchase.  
Apple receipt showing Apple?ID

“ **Family?Shared Subscription** – If the receipt shows another family member’s Apple?ID, that member must cancel the subscription.  
**Multiple Apple?IDs** – Sign in with the Apple?ID that appears on the receipt and cancel from the App Store.

### 3. Upgrade from Free to PRO

#### On the BRMB Maps Website

1. Open **User Dashboard** – click your username ? **User Dashboard.**

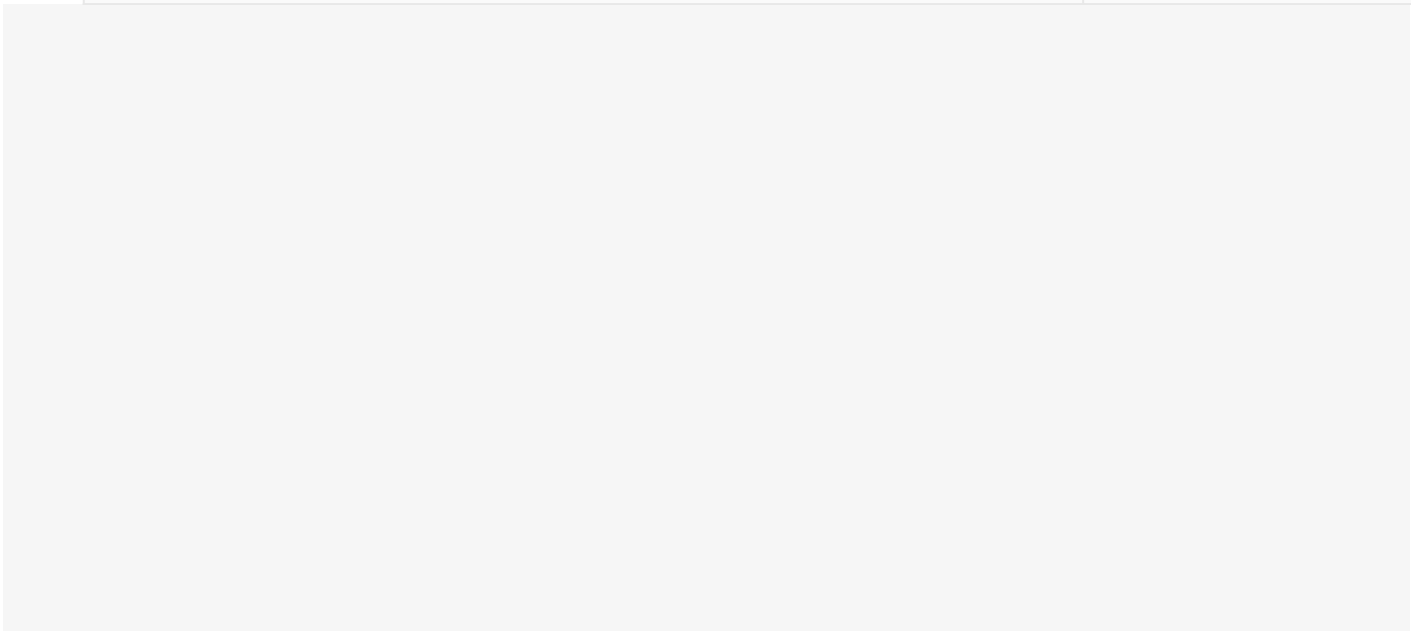


2. Click the **Settings** button (top?right).
3. On the left sidebar choose **Your Plan**.
4. Click **Upgrade to Pro** or **Change Plan** to switch to a different plan.

“ **Tip:** The upgrade takes effect immediately and you’ll be charged for the new billing cycle.

### 3. Technical Resources

Resource	Description
----------	-------------



The screenshot shows a user's settings page. On the left is a sidebar with the following items: Settings (@backmatt), General, Notification, Your Plan (highlighted), Switch to business, account, Custom Map Orders, and Help. The main content area is titled 'Your Plan' and features a large orange card with a map icon and the text 'MONTHLY PRO'. To the right of the card, it displays '\$3.5/MONTH' in large font, with 'MONTH-BY-MONTH payment' below it. Further down, it states 'Gives you access to the PRO Platform for 1 MONTH' and includes a 'Change Plan' link. Below the card, it shows 'Subscriber Since Aug 24, 2020' and 'Expiry Date Dec 28, 2024'. At the bottom of the plan section is a button that says 'Pay with Credit Card/PayPal'. A small orange 'X' icon is in the top right corner of the plan section.

Web?based user dashboard (Settings ? Your Plan).

## 4. Quick Reference

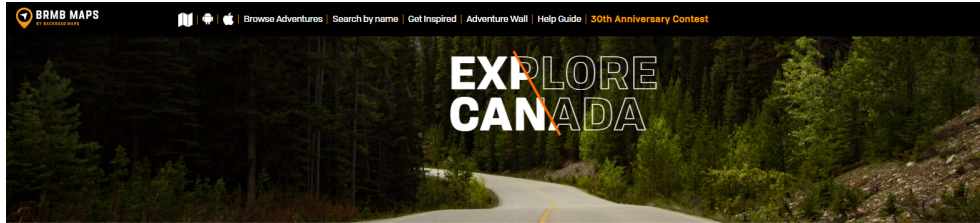
Action	Platform	Link
Cancel PRO (website)	Website	<a href="https://brmbmaps.com">https://brmbmaps.com</a>
Cancel iOS subscription	iOS App Store	<a href="https://support.apple.com/en-ca/HT202039">https://support.apple.com/en-ca/HT202039</a>
Cancel Google subscription	Google Play	<a href="https://support.google.com/googlegplay/answer/9818348">https://support.google.com/googlegplay/answer/9818348</a>
Refund (iOS)	iTunes	<a href="https://support.apple.com/en-ca/HT204084">https://support.apple.com/en-ca/HT204084</a>
Refund (Google)	Google Play	<a href="https://support.google.com/googlegplay/answer/2479637?hl=en&amp;sjid=8517244894522933406-NA">https://support.google.com/googlegplay/answer/2479637?hl=en&amp;sjid=8517244894522933406-NA</a>

**Pro tip:** Keep a copy of your subscription receipt (email or app?store screenshot) handy; it's the quickest way to identify which Apple?ID or Google?ID is managing the subscription.

# Free vs Pro

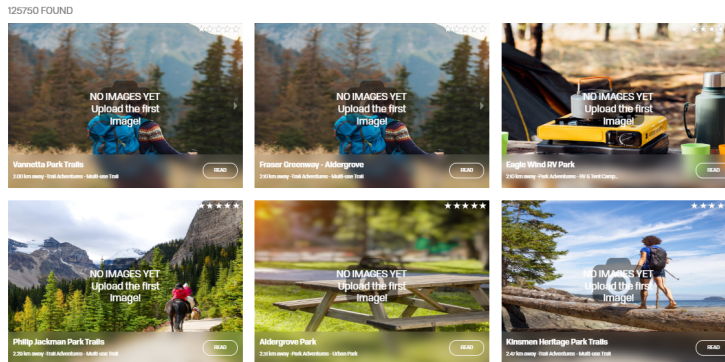
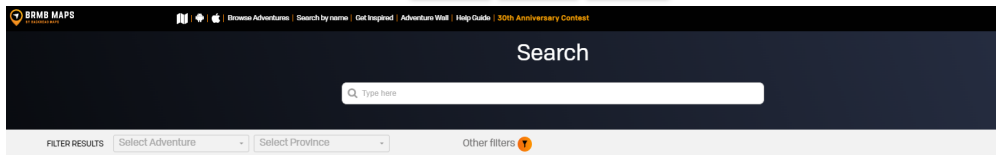
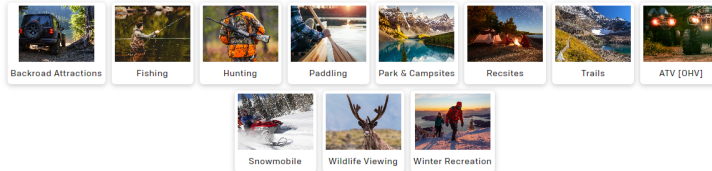
## Free vs Pro Account

Free accounts can access the Basemap and search for points of interest on the map using the **explore** feature.



Are you looking for the greatest trails in Canada for hiking, mountain biking, climbing, or other outdoor activities? BRMB Maps allow you to explore all of Canada's amazing backcountry, bringing all of the interesting roads, trails, and leisure areas together. With coast-to-coast coverage of Canada, hundreds of layers for outdoor exploration, Find trail maps that have been carefully selected, as well as reviews and pictures from other wildlife enthusiasts.

You may discover a wide variety of the greatest hiking trails in Canada to meet your needs, no matter what you're searching for. Discover countless outdoor activities for a sunny weekend.



Pro users can turn on and off 99 different layers to display the outdoor activities they are most interested in. The options range from displaying everything to display one Adventure and specific features within each Adventure. Pro users also get access to the Private / Crown Land and BC Forest Service Road layers.

There are 11 different BRMB Adventures offered through the Pro plans, each with several layers to choose from:

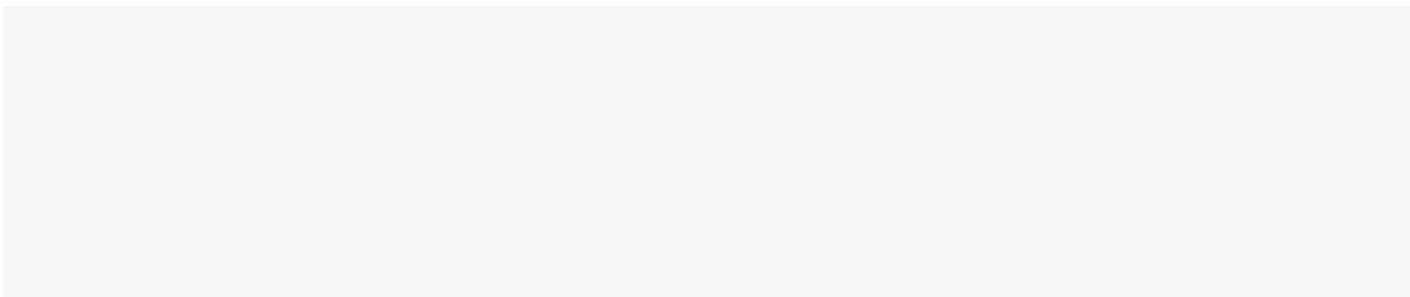
- Backroad (9 layers)

- Fishing (15 layers)
- Hunting (25 layers)
- Paddling (4 layers)
- Parks & Camping (11 layers)
- Recsite (3 layers)
- Trail (8 layers)
- ATV [OHV] (4 layers)
- Snowmobile (2 layers)
- Wildlife Viewing (1 layer)
- Winter (7 layers)

Our Pro plans also includes 2 bonus overlays:

- ○ Private / Crown Land (for 9 different provinces)
- ○ Forest Service Roads (for BC)

## Layers Menu



# Creating a Trip using the webmap(PRO users)

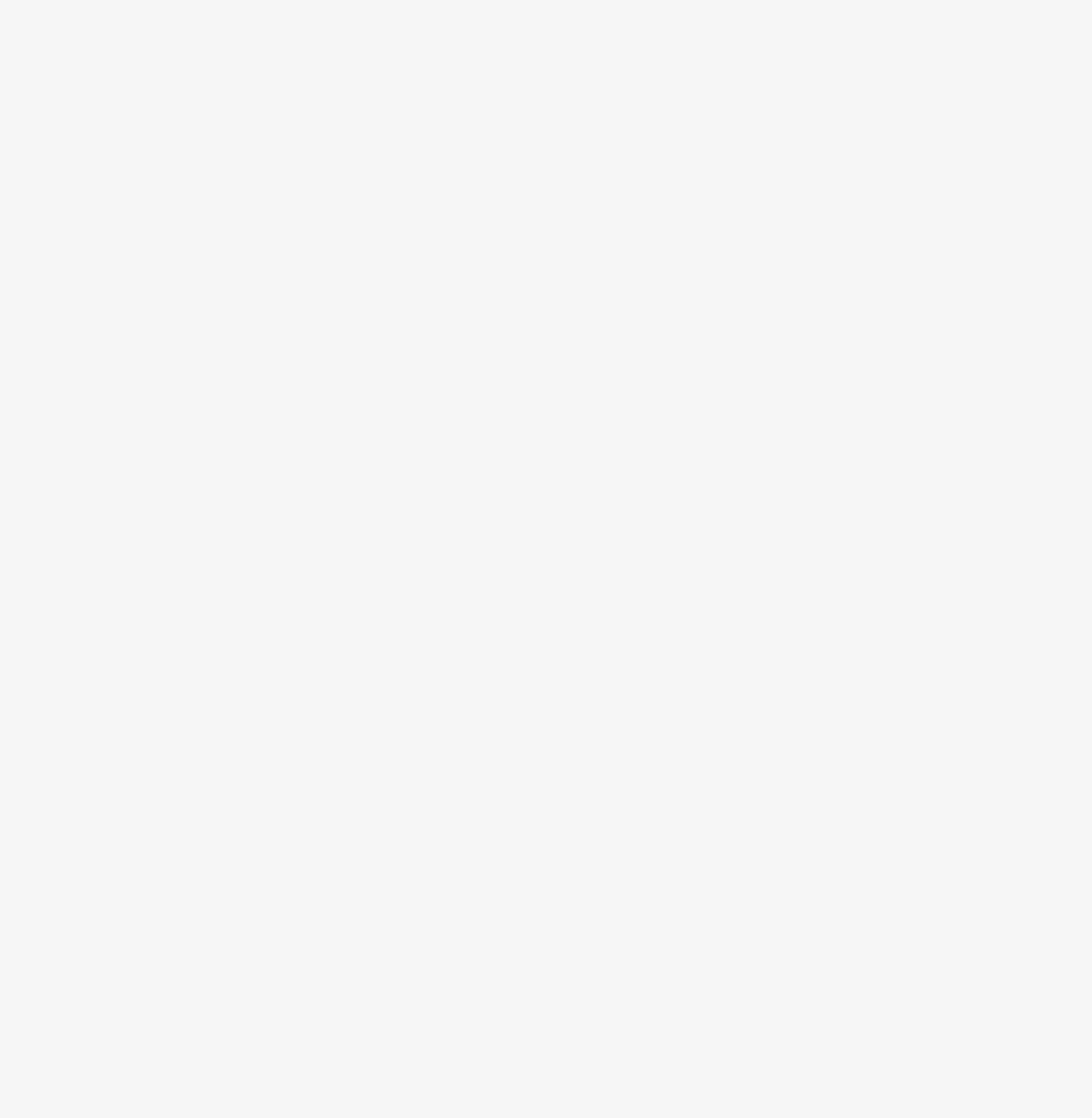
---

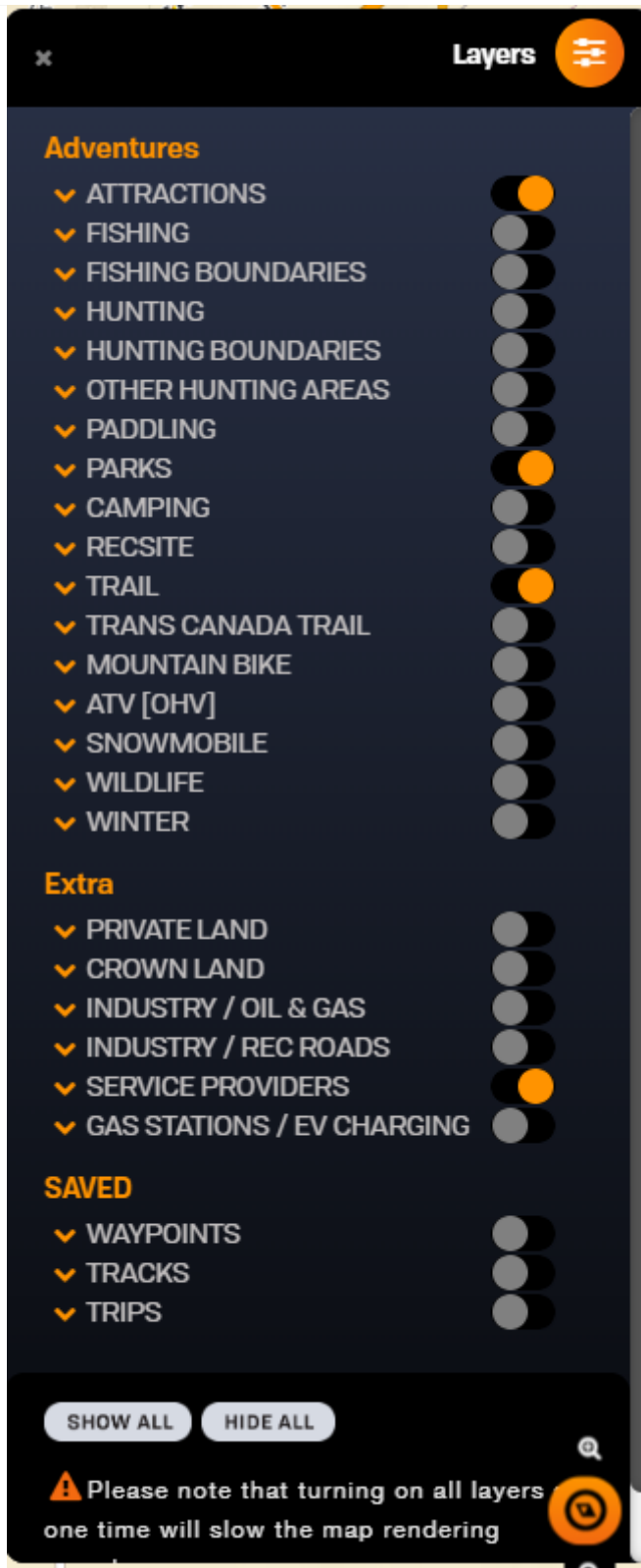
## Creating a Trip using the Webmap

This tutorial requires you to have a PRO subscription.

Login to your BRMBMAPS.com account.

Select the layers you want to see on the map.



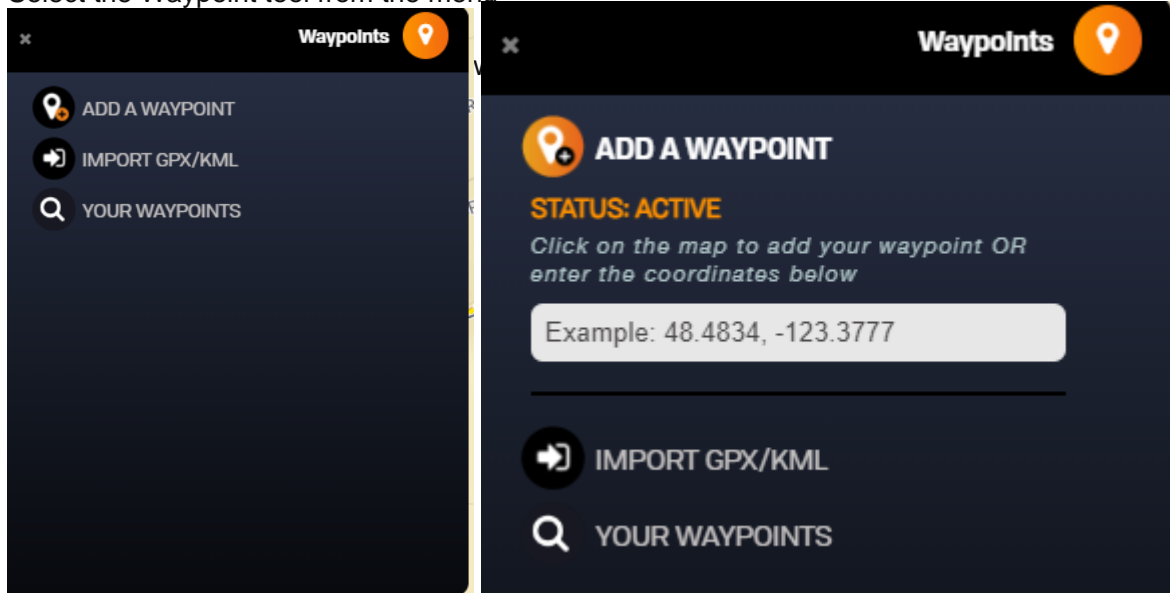


Selecting your trip data

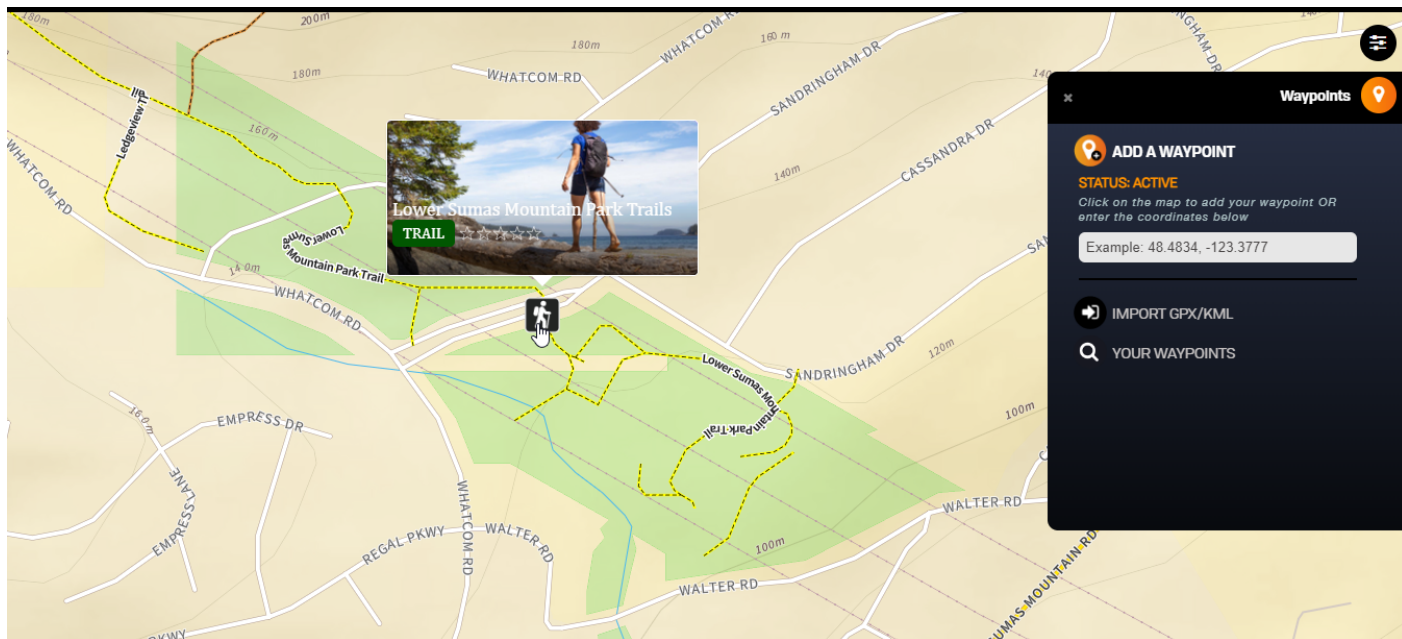
To create a trip you can add and create your own points and tracks before adding them to the trip or you can add existing trail segments and POI points to your trip.

## Adding your own Points

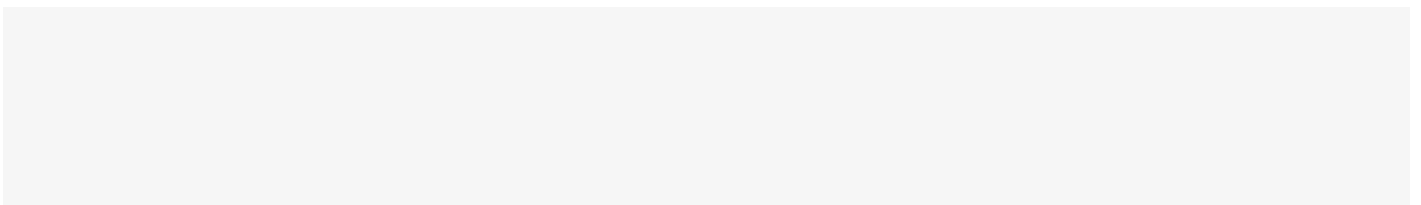
Select the Waypoint tool from the menu

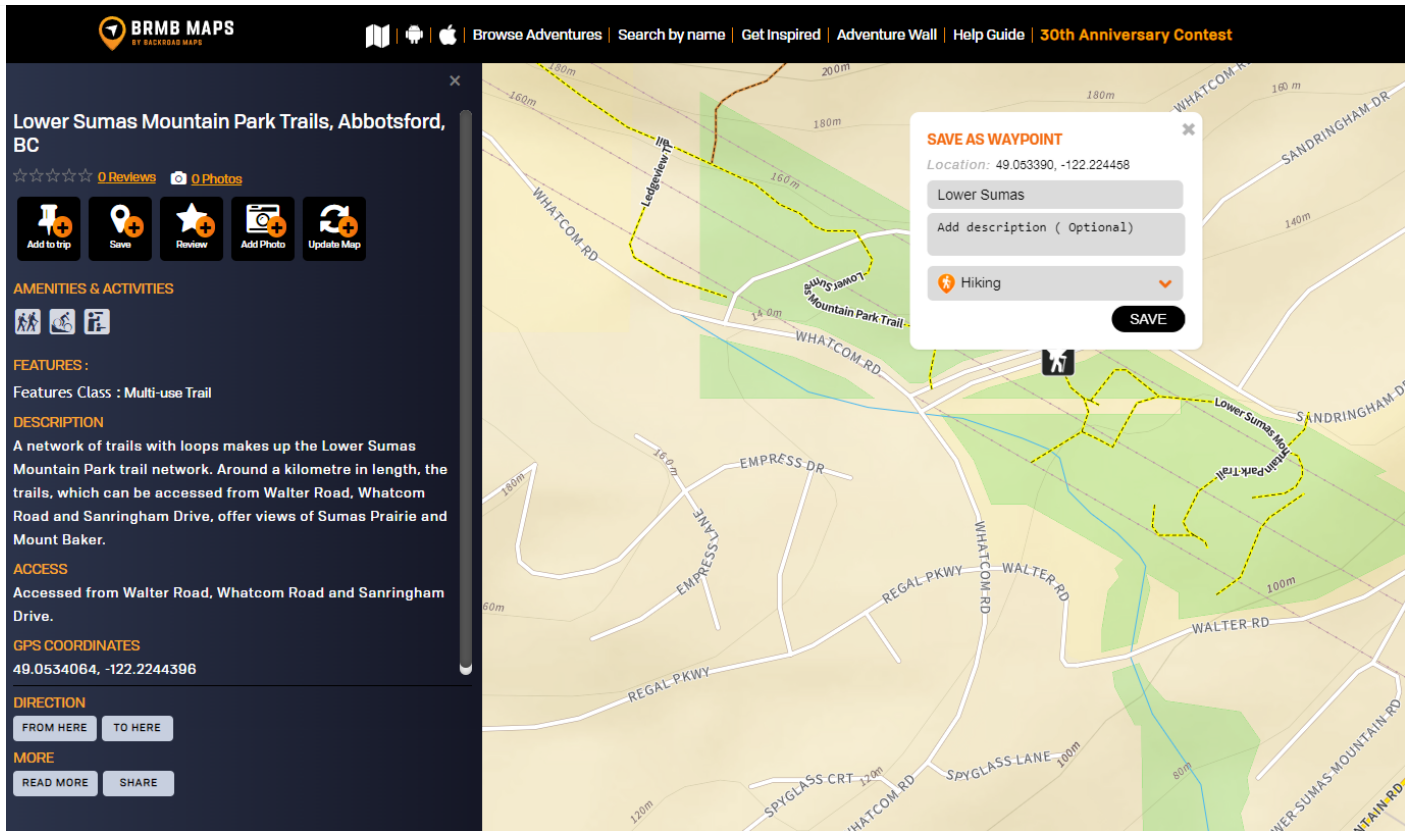


Now you can click on the map to drop the point where you would like it.

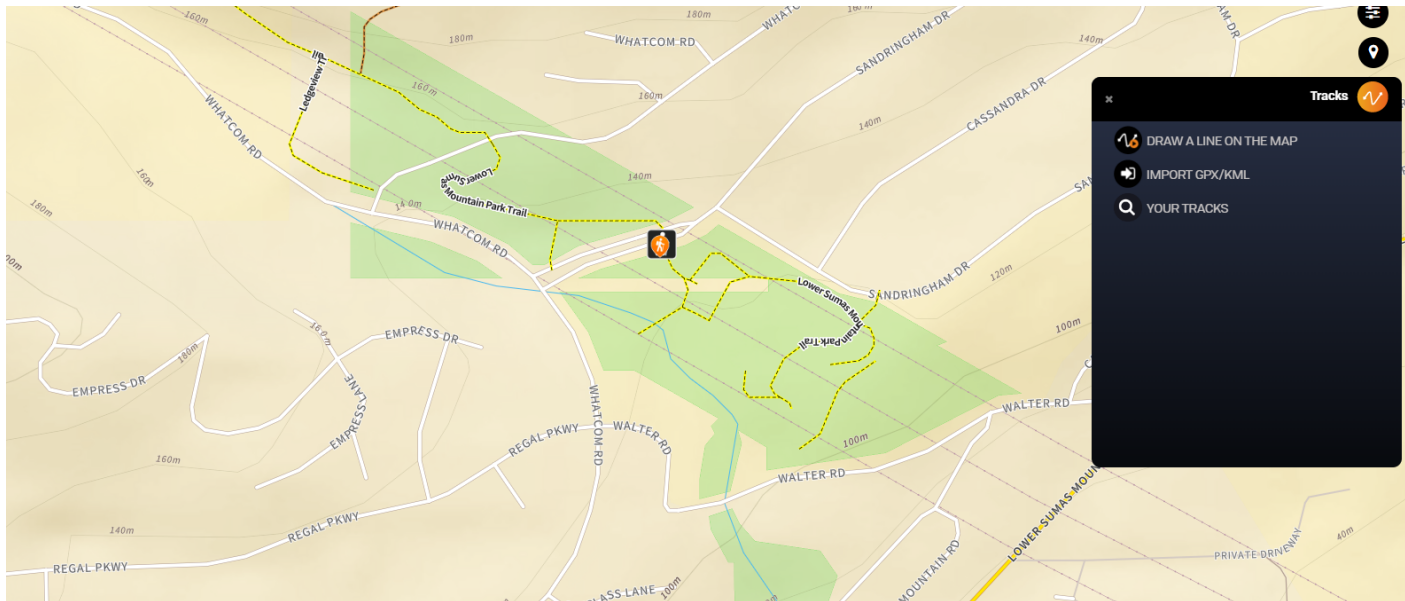


Save the trip name, add a description and give it an icon.



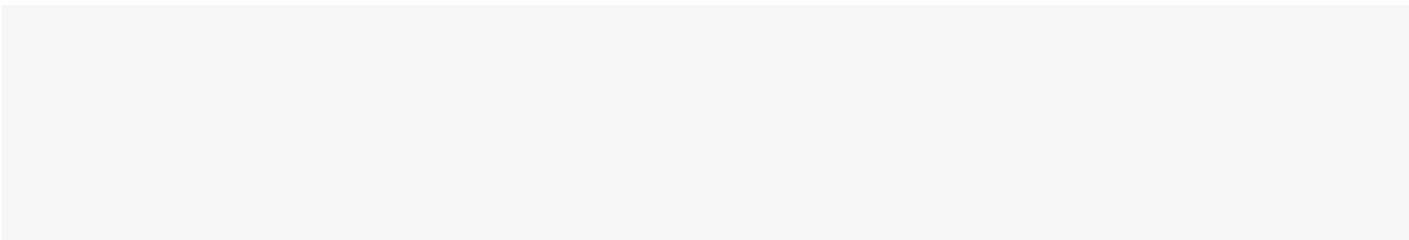


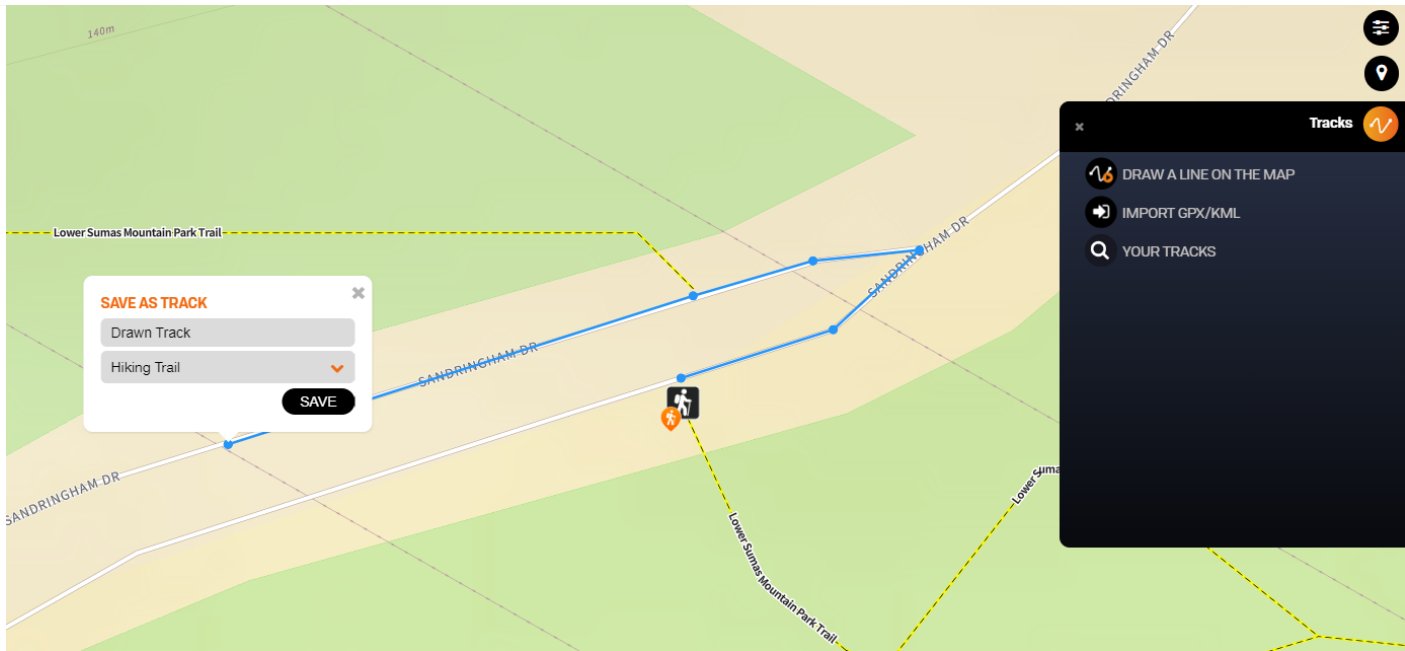
Your point will now show on the map, clicking the point will bring up the pop up menu and you can add it to your trip.



## Adding your own Tracks

To add your own tracks you can click the track tool, use the tool to draw your track lines on the map and double click when finished. It will ask you to name the track and give it a classification. You can now click your track and it will give you the option to Add to Trip.

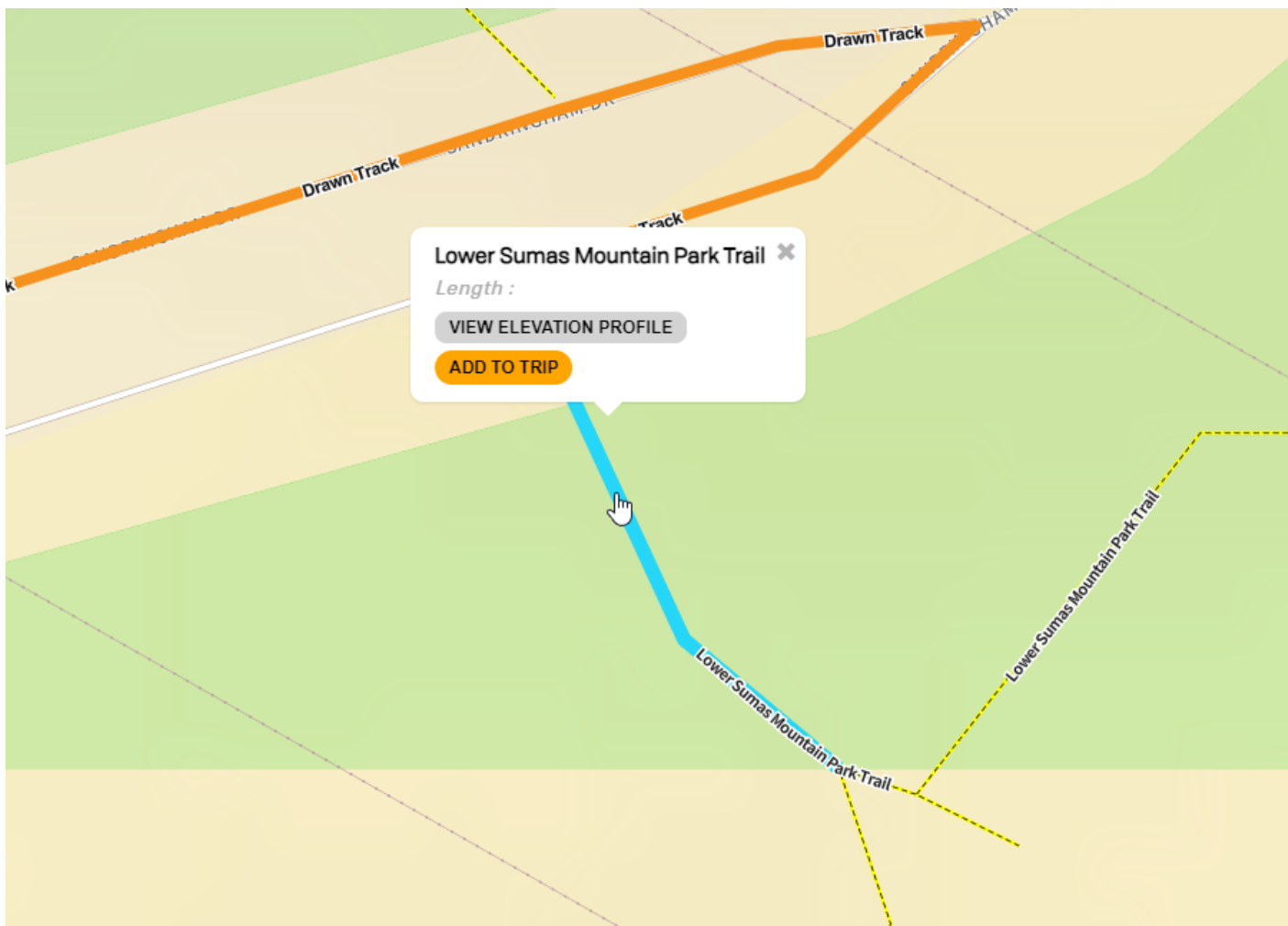




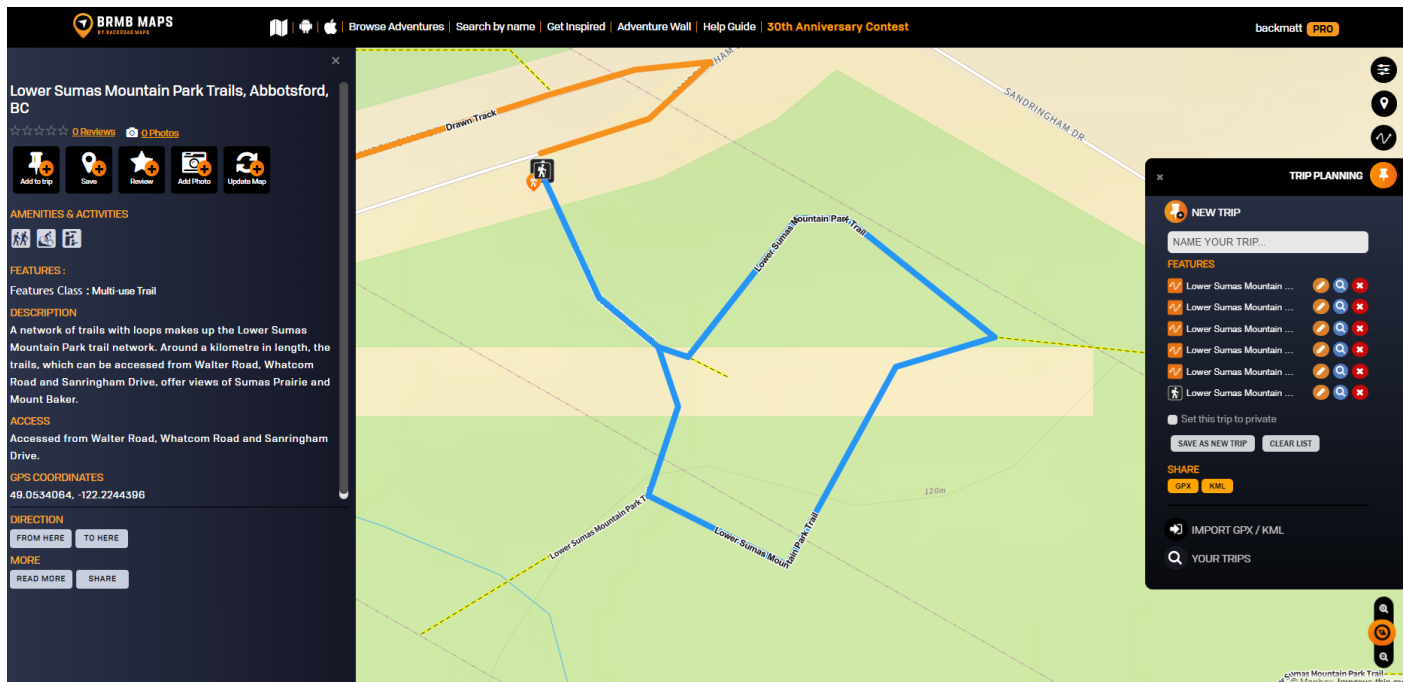
## Adding Existing POI and Tracks

You can also add POI and Track data from the adventure layers.

Click on the POI point or track you would like to add and select add to trip.



When you have added the segments of the trail and any points you want to add to your trip they will all show in the trip planning window.

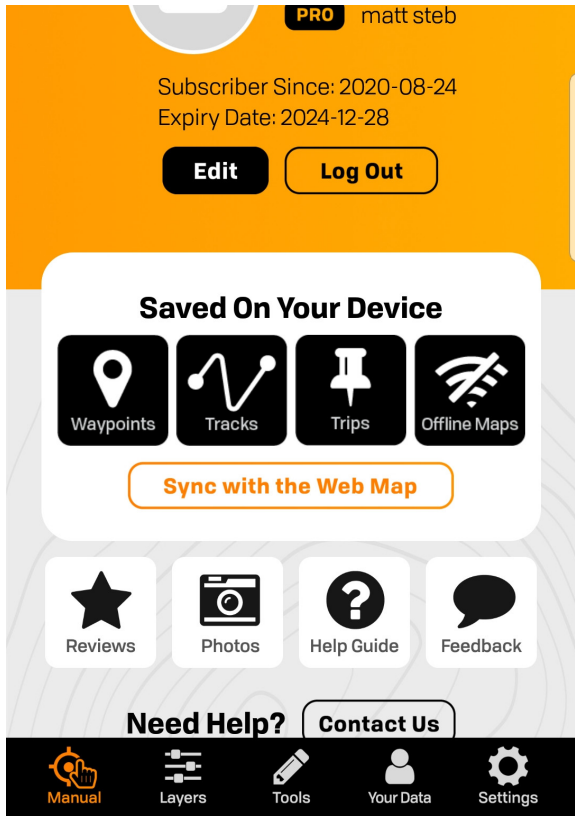


You can name the map and save it so it is available as a trip from the layers menu. If needed you can also export the trip as a .gpx or .kml file.

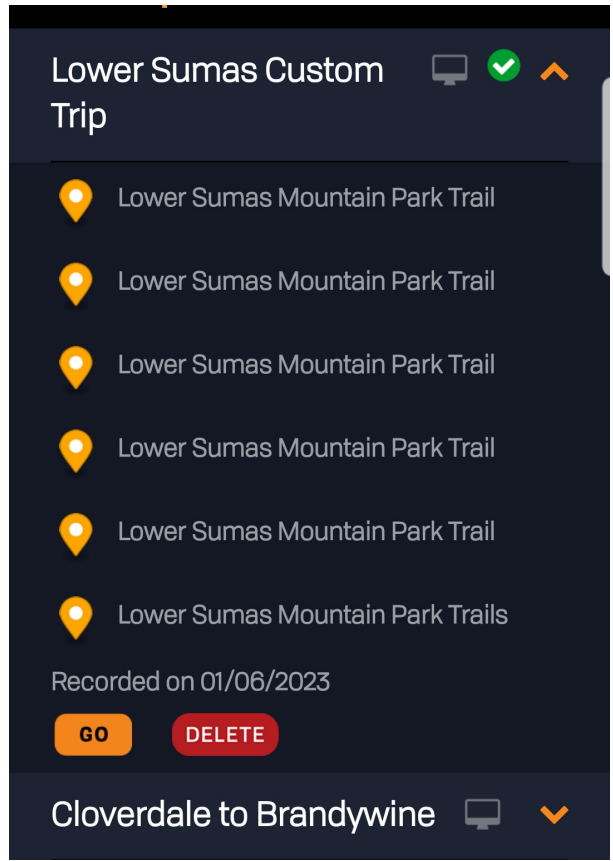
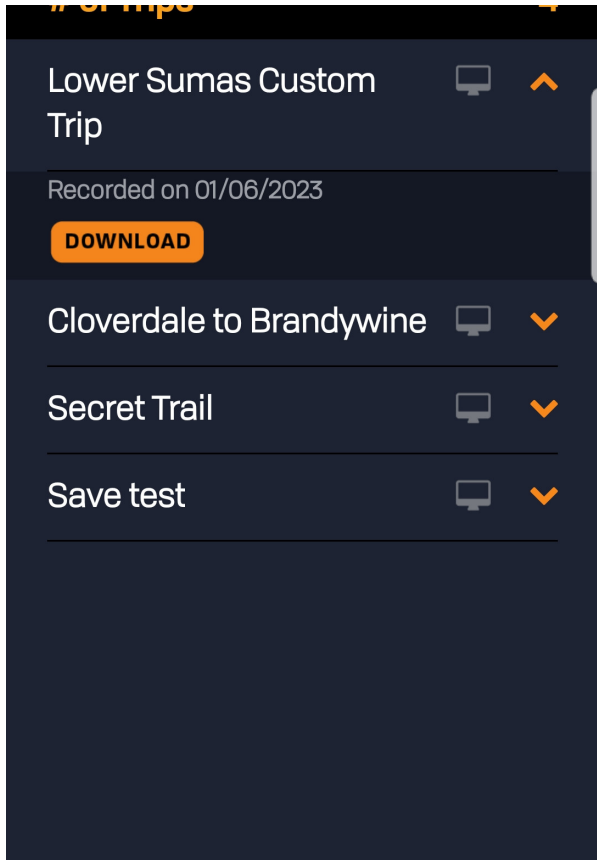
## Syncing your Trip data to your device

On your device you can open the app and tap the My Data tab to show your data.

Click Sync with Webmap to sync your data and show you your newly created trip.



After the sync you can tap Your Data and then Select Trips to list trips. Select the trip you want to download to your device and tap the Download button. The trip will now be listed and show you the trip data. Clicking the Go button will take you to your trip on the map.



# BRMBMAPS LEGEND

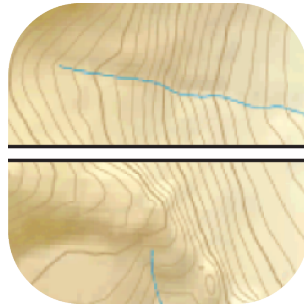
## Line Classification: Trails & Routes

Major Highways	
Secondary Highways	
Ramps	
Arterial Paved	

Collector Roads



Rural / Local Paved Roads



Main Industry Roads / Recreation Roads



Active Industry Roads / Recreation Roads



Driveways



Unclassified Roads



### Line Classification: Trails & Routes

Trans Canada Trail



Multi Use Trails



Mountain Biking Trails



Cross Country Ski Trails



ATV / OHV Trails



Snowmobile Trails



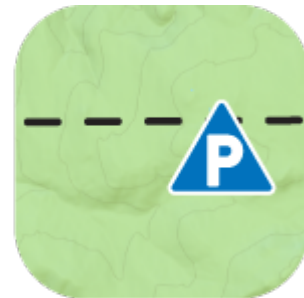
Snowshoe Trails



Paddling Routes



Portage Trails



## Line Classification: Trails & Routes

Railways Abandoned



Cut / Seismic Lines



Chair Lifts



Pipelines



Transmission Lines



Provincial Boundaries



Ferry Routes



### Points of Interest - Parks & Camping

National Park



Provincial Park



Nature Reserves & Protected Areas



Ontario Conservation



Regional Park



Urban Park



RV-Access Provincial Campsite



RV-Access Private Campsite



RV-Access Other Campsite



RV-Access BC Rec Site



Road Access BC Rec Site



Cabin / Hut / Shelter



Backcountry / Water Access Only Campsite



Picnic / Day Use Area



Picnic / Day Use BC Rec Site



### Points of Interest - Attractions

Attraction



Ghost Town



Scenic Area



Viewpoint



Big Tree



Cave



Fire Tower



Lighthouse



Anchorage/Marina



Beach



Beach Access



Dam



Hot Springs



Shipwreck



Waterfall



BRMB GeoTour(BC)



TCT Trail Pavilion



BC Rail Trail Substation



BC Rail Trail Trestle



BC Rail Trail Tunnel



Shooting Range



Ranger Station/Patrol Cabin



Diving

